

Kerbal Space Program - Bug #27532

Bulkhead crew hatches on Mk2 Crew Cabin are missing/inaccessible

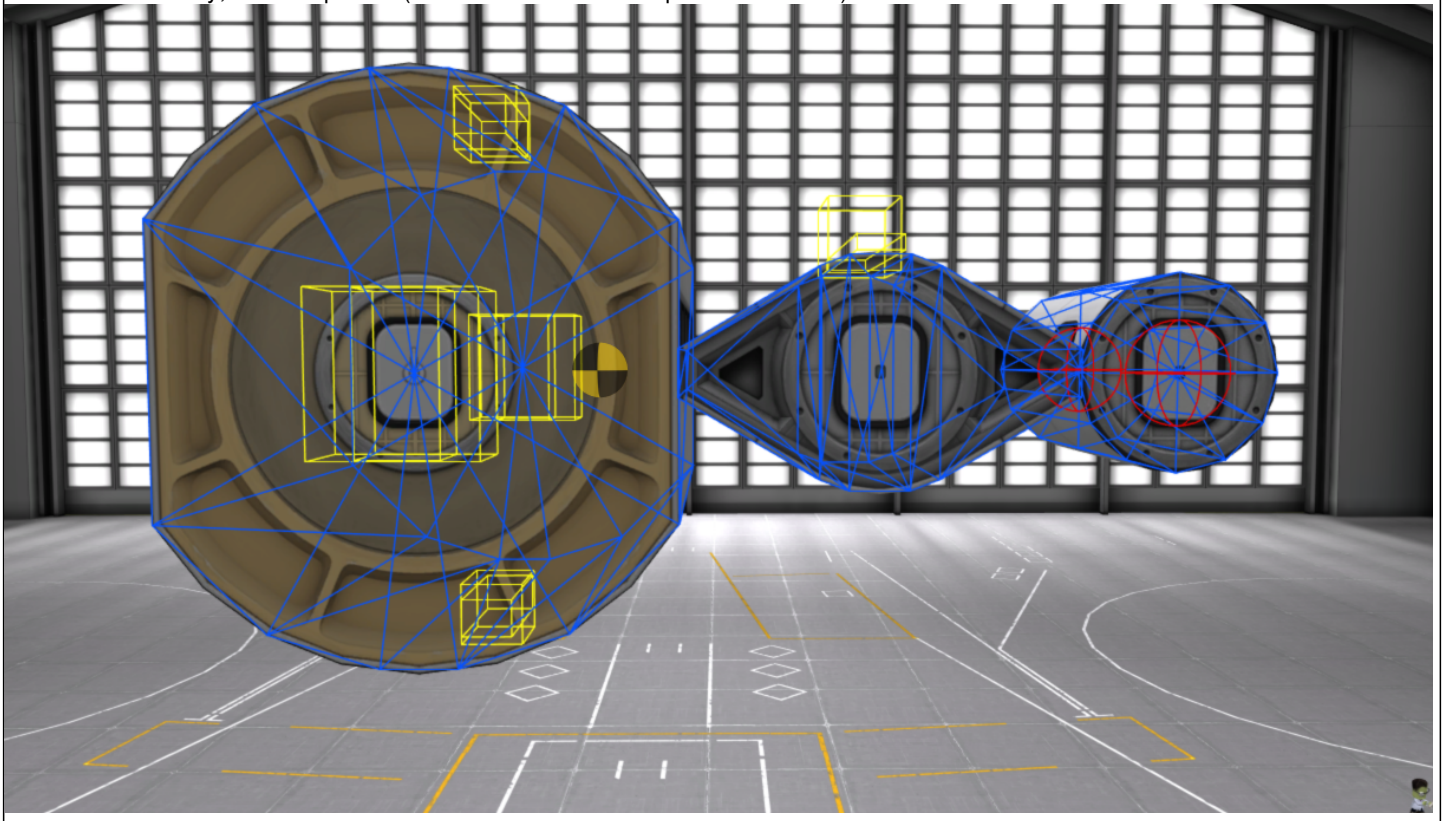
04/14/2021 08:58 AM - IvanBatura

Status:	New	Start date:	04/14/2021
Severity:	Low	% Done:	0%
Assignee:			
Category:	Parts		
Target version:			
Version:	1.11.1	Language:	
Platform:	Windows	Mod Related:	No
Expansion:	Core Game		

Description

Unlike Mk1 Crew Cabin or Mk3 Passenger Module, it is impossible to leave and board Mk2 Crew Cabin through it's bulkhead hatches.

Just for extra clarity, here's a picture (taken with Collide-o-scope mod installed)



Files

220200_20210414085215_cut.png

978 KB

04/14/2021

IvanBatura